



BHOOMI



Modular Systems Pvt. Ltd.

Established in 1990, Bhoomi Modular Systems Pvt Ltd, is India's oldest & largest supplier of heat sinks, card frame cabinets and other products used to remove excess heat generated by electronic components and systems

The ISO9001-2000 approved manufacturing facility is located in Ahmedabad the capital of Gujarat, India

Bhoomi Modular Systems Pvt. Ltd.
Plot No 56/1, Behind Fire Station
G.I.D.C., Odhav
Ahmedabad-382415
Gujarat, INDIA

U.S. : usa@bhoomiheatsinks.com
U.K. : alanfox@globalnet.co.uk

Telephone: +91 79 22876481
Cell : +91 99250 10256 - +91 99250 30256
Email: info@bhoomiheatsinks.com
Web: www.bhoomiheatsinks.com



BONDED FIN



BONDED SECTION



**DUAL BASE
BONDED FIN**

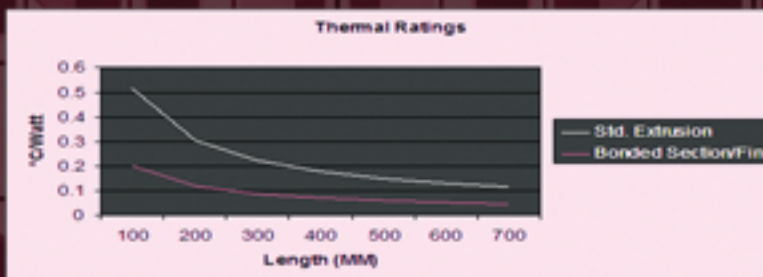


BONDED FIN · BONDED SECTION · DUAL BASE BONDED FIN

Bhoomi Modular Systems P. Ltd is India's oldest and largest supplier of heat sinks and other products used to remove excess heat generated by the electronic components.

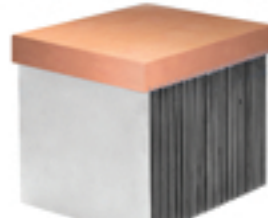
The control and flexibility afforded by our vertical integration provides us with the fundamental advantages over our competitors and strong presence in the challenging european and american markets, proves that.

Bhoomi is a dedicated design and manufacturing company and as a part of this continuous RnD, Bhoomi has developed various BONDED FIN HEAT SINKS for numerous high temperature and high efficiency applications.



The graph above shows a remarkable difference in the thermal efficiencies between regular extruded heat sink to a bonded fin heat sink of similar size

BONDED FIN HEAT SINKS

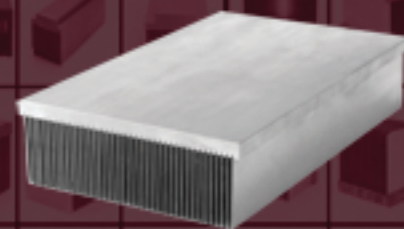


HIGH FIN DENSITY EXTRUSIONS

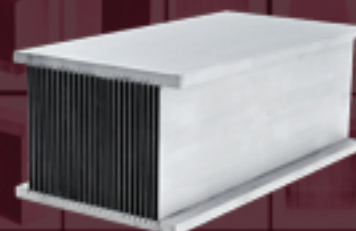


BONDED SECTION

- Made by bonding aluminum or copper sheets to an extruded or machined base (aluminum or copper)
- Extremely high values of thermal dissipation achieved with dense fin spacing and large fin height to width ratios.
- Eliminates the need of forced convection in many applications with strict IP (Ingress protection) rules. However, forced convection can be accommodated for high temperature applications.
- Sizes: Width: Std widths: 116 mm, 215 mm, 315 mm, 400mm. (Customizing as per need possible)
Length: up to 1000 mm.
Height: 0-150 mm.
- Finish: Degreased and buff metal finish.
- Customized CNC machining (drilling and tapping, milling) can be provided for mounting components. All heat sinks supplied with flatness of 10µm/100 mm².
- RoHS compliant



BONDED FIN



**DUAL BASE
BONDED FIN**

- It provides all the merits of the standard Bonded fin heat sink with an added advantage of dual mounting surface for maximizing space utilization. Thus, resulting in smaller assemblies and smaller footprint of the end product.
- Provision of forced convection possible.
- Completely customized as per the need of the application. Contact us for further info.
- RoHS compliant

COMPLETE CUSTOMIZATION IN REGARDS TO SIZE, METAL SELECTION AND MACHINING IS POSSIBLE. CONTACT US FOR FURTHER DISCUSSION.